



# Monument Setter

## Transportable Installer

### Parts Manual



**Kesmac Inc.**

23324 Woodbine Avenue, Keswick Ontario Canada L4P 0N1

Tel (905) 476-6222 Fax (905) 476-6744

Web Site [www.brouwerkesmac.com](http://www.brouwerkesmac.com) Email [info@kesmac.com](mailto:info@kesmac.com)



**KESMAC INC.**  
DBA BROUWER KESMAC  
23324 Woodbine Ave.  
Keswick, ON L4P 0N1  
**Phone:** (905) 476-6222  
**Fax:** (905) 476-6744  
**Website:** www.brouwerkesmac.com



## STATEMENT OF LIMITED WARRANTY

**Brouwer Kesmac** warrants its full line of equipment to be free from defects in material and factory workmanship for a period of 12 months. This warranty begins on the date of sale or use of the equipment to the original purchaser. This statement does not extend or limit engine, tractor or component warranties in which the engine, tractor or component manufacturers may carry extended time periods up to 24 months. Engine, tractor or component warranty claims will be subject to the engine, tractor or components manufacturer's approval.

**Replacement Parts** carry a 90 day replacement warranty and are reimbursed to the dealer. All electrical and hydraulic parts are limited by this policy and will only be covered upon approval by the service department after inspection of the part. The installation and removal of a part will automatically place that part under the replacement parts warranty.

This warranty is limited exclusively to equipment or accessories manufactured or supplied by **Brouwer Kesmac** and are subject to the inspection and analysis by the company to conclusively identify the nature and cause of failure.

**PRODUCT REGISTRATION FORM** must be completely filled out, signed by the customer at the original date of installation, and returned to **Brouwer Kesmac** before any claims will be considered.

**Brouwer Kesmac** reserves the right to incorporate improvements in material and design of its products without notice and is not obligated to make the same improvements to equipment previously manufactured.

**Brouwer Kesmac** is not obliged under any warranty policy different from the Kesmac Brouwer Turf warranty policy as published above.

### **BROUWER KESMAC RESPONSIBILITIES**

**Brouwer Kesmac's** obligation under the terms of this warranty is limited to the repair, replacement or credit, at its option, of the equipment, parts or supply items that conform to its warranty.

### **DEALER'S RESPONSIBILITIES**

1. Only factory-trained service or approved personnel will be permitted to perform warranty service on **Brouwer Kesmac** equipment.
2. All major warranty claims exceeding \$650.00 (in total including parts and labour) must be authorized by **Brouwer Kesmac** before work is performed.
3. All replacement parts used in warranty situations must be furnished by **Brouwer Kesmac** or approved by **Brouwer Kesmac** personnel. The use of non-recommended oil could nullify warranty.

### **OWNERS RESPONSIBILITIES**

The owner is obligated to operate and maintain the equipment in accordance with the recommendations published by **Brouwer Kesmac** in the owners/operators manual for the unit. The owner is responsible for the costs associated with such maintenance and operating adjustments that may be required on a regularly scheduled basis. Where applicable the owner is responsible for transportation to and from the dealership or service calls made by the dealer.

### **CONDITIONS THAT VOID WARRANTY**

This warranty shall not apply to equipment which:

- 1. Has had repairs or modifications not authorized by **Brouwer Kesmac**
- 2. Has been subject to abuse, improper maintenance, or improper application.
- 3. Has been modified from original equipment specifications.

### **WARRANTY EXCEPTIONS**

This warranty does not apply to the following items:

- 1. Wear items including blades, cutting edges, cutting arms, spark plugs, belts, filters, bearings, sprockets, chains, tires, light bulbs, lubricants and fluids etc. Cost of normal maintenance including replacement of service items.
- 2. Damages to engine/drive systems caused by lack of/ or improper lubricants and/or fluids.
- 3. Damages arising from accident, misuse or neglect.
- 4. Damages to engine/drive systems caused by improper operation and/or maintenance.
- 5. **Brouwer Kesmac** will not be liable for any incidental or consequential damage or injuries, including but not limited to loss of profits, loss of crops, rental of substitute equipment, or other commercial loss or for damage to the equipment in which the Company Product is installed.

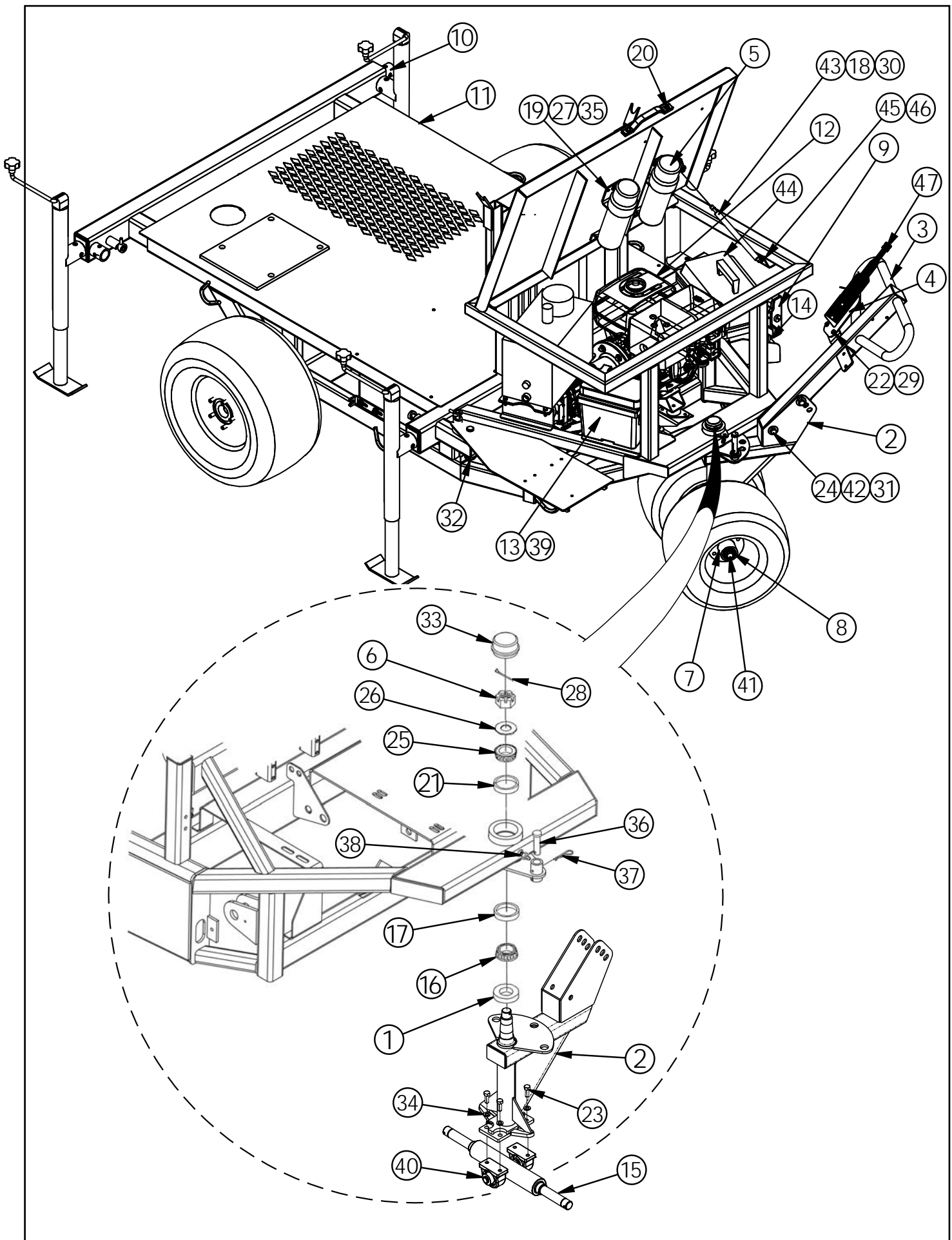
### **FREIGHT CARRIER DAMAGE**

Claims for equipment damaged in transit should be referred to the freight carrier. Visible damage should be reported immediately and concealed damage as soon as possible, in accordance with freight carrier regulations.



## **CONTENTS**

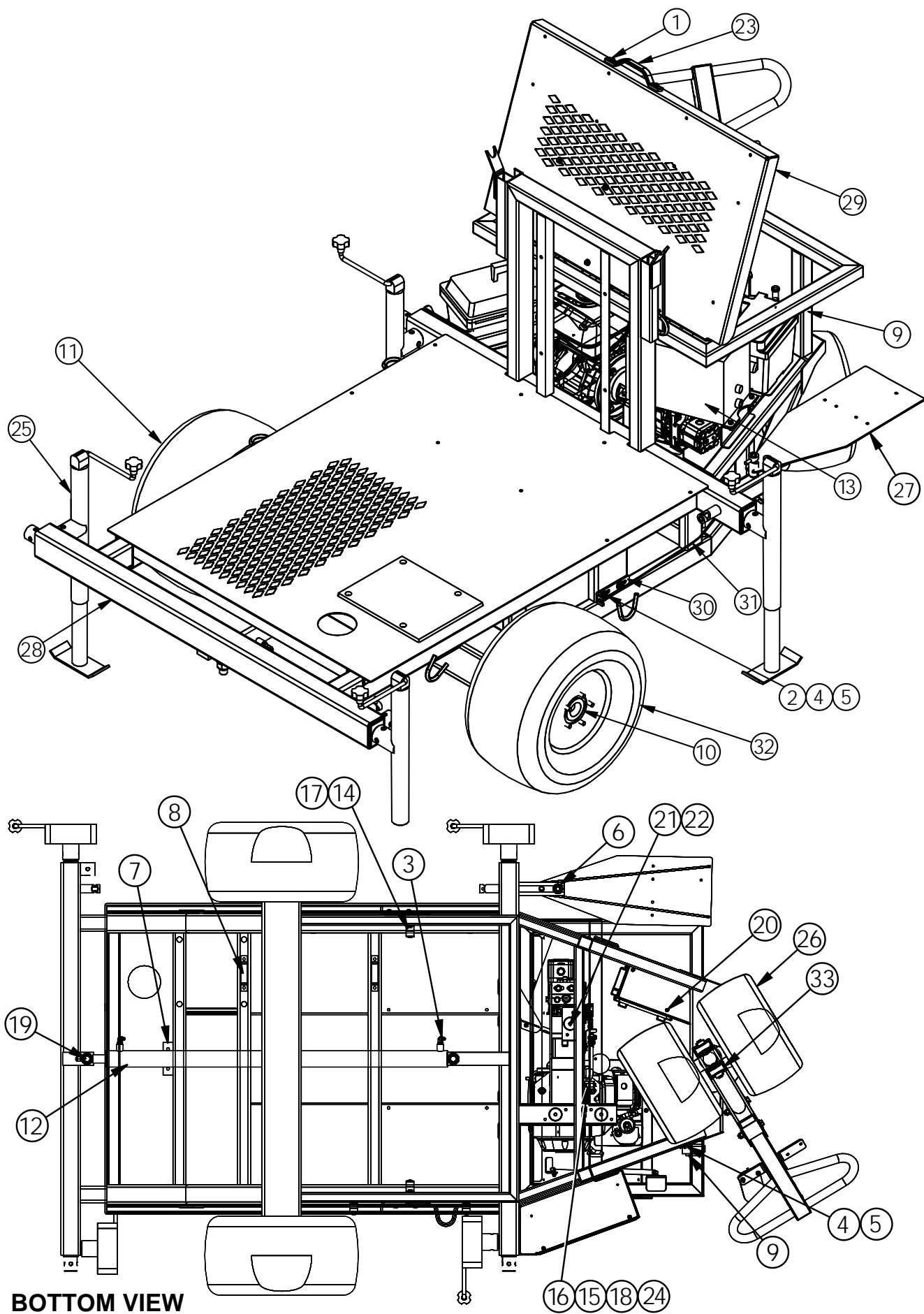
	Page
Monument Setter Assembly	1-01
Motor & Pump Assembly	1-05
Decals	1-07
Electrical	1-09
Hydraulics	1-11



## Brouwer Monument Setter

### Monument Setter Assembly

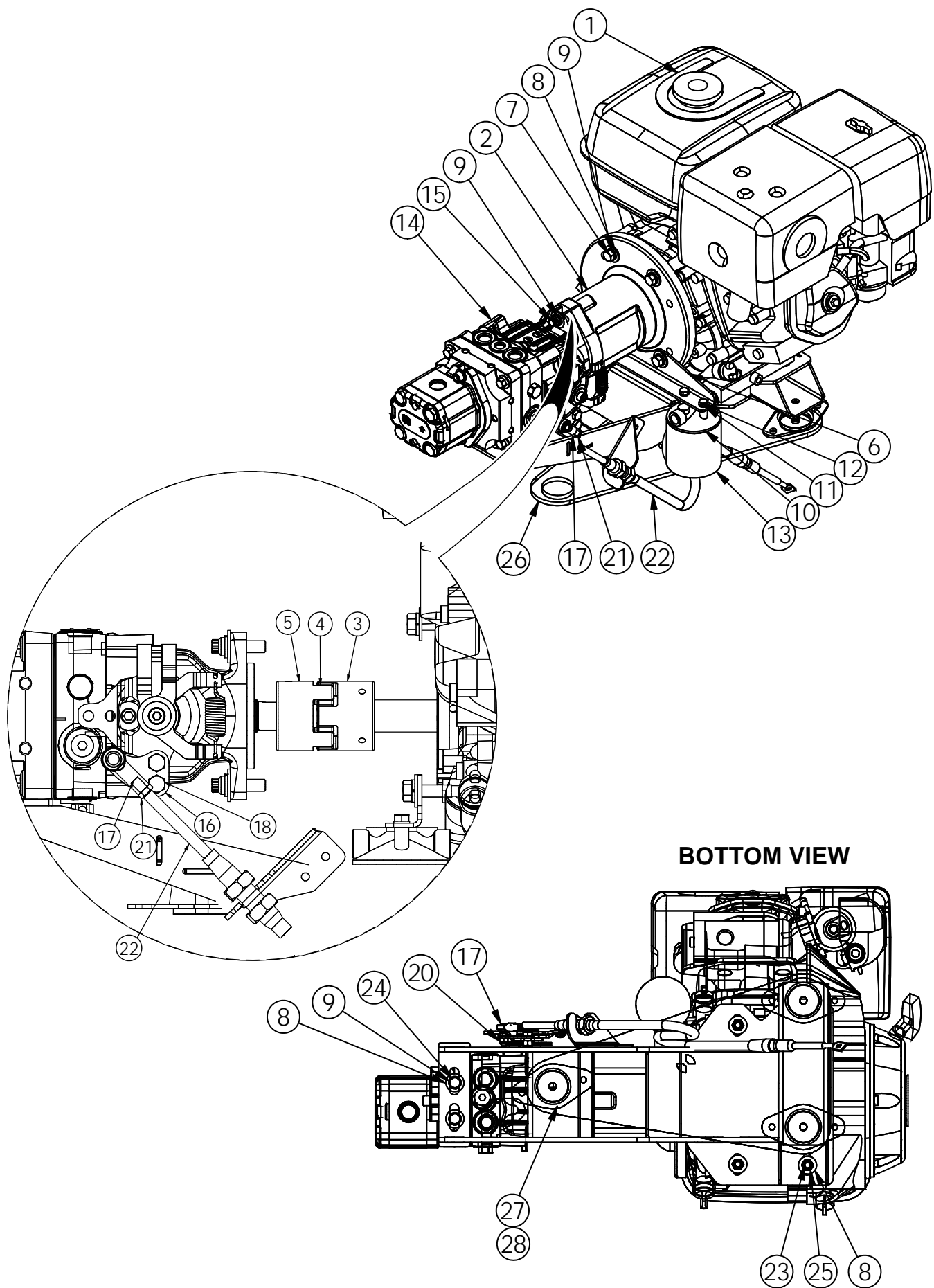
ITEM NO.	PART NO.	QTY.	DESCRIPTION
1	KB90015	1	MULTI-LIP SHAFT SEAL - 1.575 I.D. x 2.575 O.D. x 0.600 THK.
2	4160346	1	DUAL WHEEL STEERING YOKE W/A
3	4160894	1	HANDLE WELDMENT
4	4161109	1	PARKING BRAKE LEVER MOUNT
5	KM99074	2	OPERATOR'S MANUAL CANISTER - <b>CURRENT</b>
	KN02060	2	LITERATURE CONTAINER - <b>NON CURRENT</b>
6	KX20032	1	1-14, HEX SLOTTED NUT, PLAIN FINISH
7	MW10007	2	WHEEL HUB
8	MW10002	4	TAPERED ROLLER BEARING CONE (TIMKEN L44643)
9	KEYBOX	1	SWITCH (PART OF KD40067 ENGINE)
10	4161155	2	JACK MOUNT W/A
11	4161170	1	BMS MAIN FRAME
12	4161187	1	MOTOR / PUMP ASSEMBLY
13	4161188	1	BATTERY BOX MOD
14	4161208	1	CLAMP BAR - KM00005 TOOL BOX
15	4161211	1	PIVOTING REAR AXLE W/A
16	KB23013	1	TAPERED ROLLER BEARING 1.375 (CONE)
17	KB23014	1	TAPERED ROLLER BEARING 1.375 (CUP)
18	F210200	3	HEX LOCK NUT - 10-24 UNC
19	F040406	4	BOLT 1/4 UNC x 3/4 Gr 8
20	F040410	6	HEX BOLT - 1/4 -20 UNC x 1.00 Gr 8
21	MW10010	1	MAIN WHEEL CUP - SMALL
22	F040510	5	HEX BOLT - 5/16 - 18 UNC x 1.0 LG. GR. 8
23	F040610	5	BOLT - 3/8 UNC x 1.0 Gr 8
24	F040840	2	HEX HD BOLT - 1/2-13 UNC x 4.0 GR 8
25	KB23021	1	TAPERED ROLLER BEARING - SMALL
26	KX20031	1	WASHER - FLAT 1.00
27	F210400	4	1/4-20 UNC NYLOC NUT
28	KX20033	1	COTTER PIN - 7/32 DIA. X 2.50 LG.
29	F210508	5	NUT - 5/16 UNC NYLOC Gr 8
30	F540206	3	BOLT - 10 UNC x 3/4 PAN HD PHIL
31	F210808	2	NUT-1/2 UNC NYLOC Gr 8
32	F211608	2	NUT - 1 UNC NYLOC Gr 8
33	KX20038	1	DUST CAP
34	F310608	5	WASHER - 3/8 LOCK Gr 8
35	F320400	8	WASHER-1/4
36	KX01230	1	PIN - 3/4 CLEVIS X 3.00 LG. ADJUSTABLE
37	F940224	1	HITCH PIN CLIP - 0.093 x 2.50
38	KM11400	1	STRAIGHT GREASE FITTING
39	KE10218	1	UTILITY BATTERY
40	KB30012	2	PILLOW BLOCK BEARING
41	MW10006	1	NUT - SLOTTED 1.00 JAM
42	F320808	4	WASHER - 1/2 GR 8
43	KM10005	1	GAS SPRING 18 IN. X 60 LBS.
44	KM00005	1	TOOL BOX - <b>CURRENT</b>
	KM00014	1	METAL TOOL BOX 16 IN. - <b>NON CURRENT</b>
45	KM99013	2	BALL STUD
46	T101257	1	RETAINING WASHER
47	KD10063	1	BRAKE LEVER





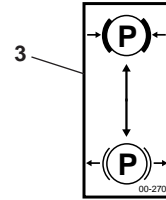
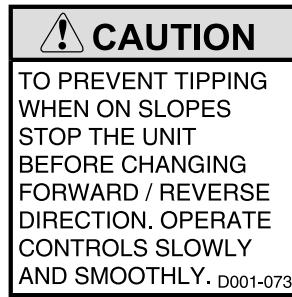
**Brouwer Monument Setter  
Monument Setter Assembly**

ITEM NO.	PART NO.	QTY.	DESCRIPTION
1	F320408	6	WASHER - 1/4 Gr 8
2	F320608	4	WASHER - 3/8 Gr 8
3	4-6-070220	2	FITTING STRAIGHT THREAD O-RING 90° ELBOW - SAE 37°FLARE-TWIN
4	F020610	4	BOLT - 3/8 UNC x 1 CARRIAGE
5	F210608	4	NUT - 3/8 UNC NYLOC Gr 8
6	KB11614	2	FLANGED BUSHING 1.00 I.D. x 1.25 O.D. x 1.50 LG.
7	4161259	1	CLAMP BRACKET - SLIDE CYL. U-BOLT
8	4161393	2	BMS HYD. HOSES SUPPORT PLATE
9	KEYBOX	1	SWITCH (PART OF KD40067)
10	KH30078	1	HYDRAULIC MOTOR C/W BRAKE LH - <b>CURRENT</b>
	KH30050	1	BRAKE DRUM 5 BOLT - <b>NON CURRENT</b>
11	KH30079	1	HYDRAULIC MOTOR C/W BRAKE RH
	KH30050	1	BRAKE DRUM 5 BOLT - <b>NON CURRENT</b>
12	KH31012	1	CYLINDER 2" BORE 48" STROKE - <b>CURRENT</b>
	4161108	1	TRAVEL STOP ROD - <b>NON CURRENT</b>
13	KH35002	1	MAXILIFT HYD TANK - REF (PART OF CRANE KH35001, 003, OR 005)
14	KH63004	4	COVER PLATE - TWIN SERIES HOSE CLAMP #3
15	KH63011	1	COVER PLATE - SINGLE CLAMP STAUFF #2
16	KH64004	2	CLAMP - 0.50 SINGLE STAUFF 2127-PP
17	KH65006	8	STAUFF CLAMP - 0.75 DOUBLE
18	F040414	2	BOLT - 1/4 UNC x 1 1/2 Gr.8
19	F041650	2	HEX BOLT - 1.00-8 UNC x 5.00 Gr 8 - <b>CURRENT</b>
	F220808	1	HEX JAM NUT - 1/2 - 13 UNC Gr 8 - <b>NON CURRENT</b>
20	F210408	9	1/4-20 UNC NYLOC NUT Gr 8
21	KM71020	3	ENGINE MOUNT
22	KM71021	3	ENGINE MOUNT WASHER
23	KM99011	1	GRAB HANDLE
24	F310408	2	WASHER - 1/4 LOCK Gr 8
25	KW50009	4	TONGUE JACK, 5000 LB, 15" LIFT, TOP WIND
26	MW52003	2	18 X 9.50 4 PLY RIB TIRE - REF (PART OF MW50004 TIRE ASSY)
27	4161146	1	BMS VALVE MOUNT W/A
28	4161153	1	TELESCOPIC STABILIZER FRAME W/A
29	4161114	1	REAR DECK W/A
30	4161121	2	BRAKE CABLE ANCHOR
31	KD10061	2	BRAKE CABLE ASSEMBLY
32	4161118	2	TIRE AND RIM ASSEMBLY 24 X 12-12 6 PLY
33	KB30012	2	PILLOW BLOCK BEARING

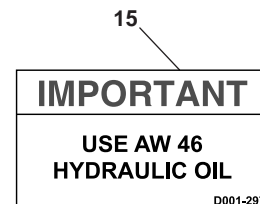
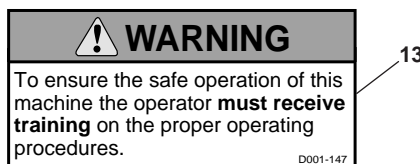
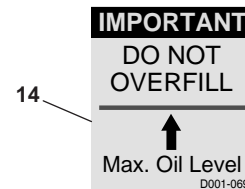
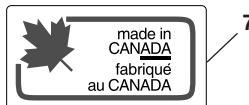
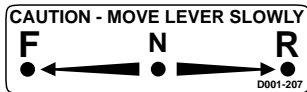


**Brouwer Monument Setter  
Motor & Pump Assembly**

ITEM NO.	PART NO.	QTY.	DESCRIPTION
1	KD40067	1	HONDA ENGINE GX390 - 13 HP
2	KD85117	1	PUMP MOUNT
3	KD85115	1	1.00 COUPLING
4	KD85114	1	SPIDER 1.00 BORE 24/32
5	KD85116	1	7/8 COUPLING
6	4160921	1	FILTER MOUNTING BRACKET
7	F040612	4	BOLT - 3/8 UNC x 1 1/4 Gr 8
8	F320608	16	WASHER - 3/8 Gr 8
9	F310608	8	WASHER - 3/8 LOCK Gr 8
10	KH40075	1	FILTER HEAD
11	F310408	2	WASHER - 1/4 LOCK Gr 8
12	F040406	2	BOLT 1/4 UNC x 3/4 Gr 8
13	KH40076	1	FILTER ELEMENT
14	KH30045	1	GEAR PUMP C/W 0.19 AUX PUMP
15	F560612	2	BOLT - 3/8 UNC x 1 1/4 FERRY CAP FLANGED 12 PT HD
16	4161053	1	PUMP CONTROL LINK
17	KB03004	1	FEMALE ROD END - COMPLETE WITH STUD 1/4"
18	F040506	2	BOLT - 5/16 UNC x 3/4 Gr 8
19	F210500	2	NUT-5/16 UNC NYLOC
20	F210400	1	1/4-20 UNC NYLOC NUT
21	F220450	1	NUT - 1/4 - UNF JAM
22	KD10061	1	FELSTED CABLE 71 IN.
23	F040616	4	BOLT - 3/8 UNC x 1 3/4 Gr 8
24	F040614	2	HEX HD BOLT - 3/8-16 UNC x 1.50 GR 8
25	F210608	4	NUT - 3/8 UNC NYLOC Gr 8
26	4161220	1	ENGINE MOUNT PLATE W/A
27	KM71020	3	ENGINE MOUNT
28	KM71021	3	SNUBBING WASHER



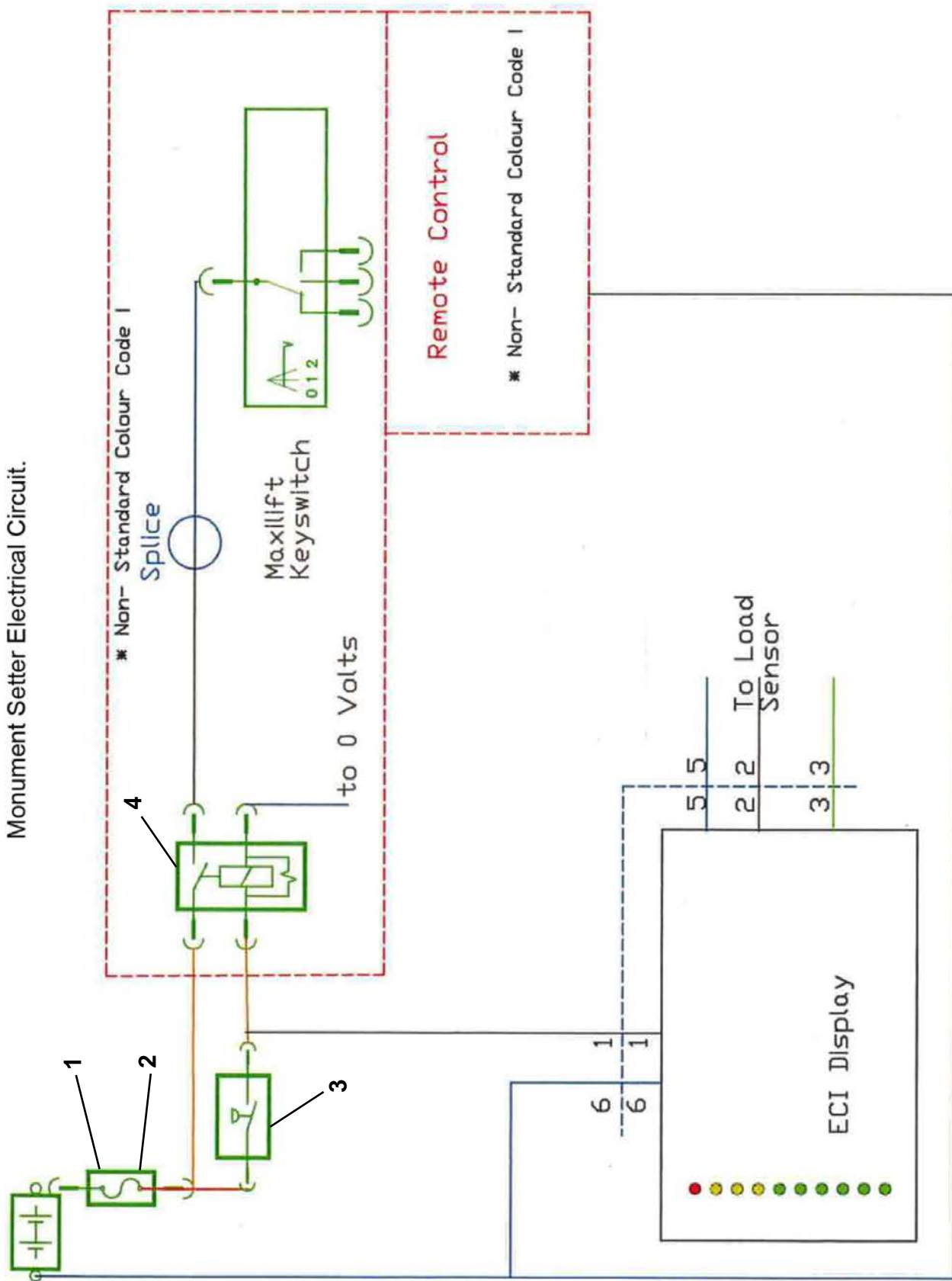
# MONUMENT SETTER



**Brouwer Monument Setter  
Monument Setter Decals**

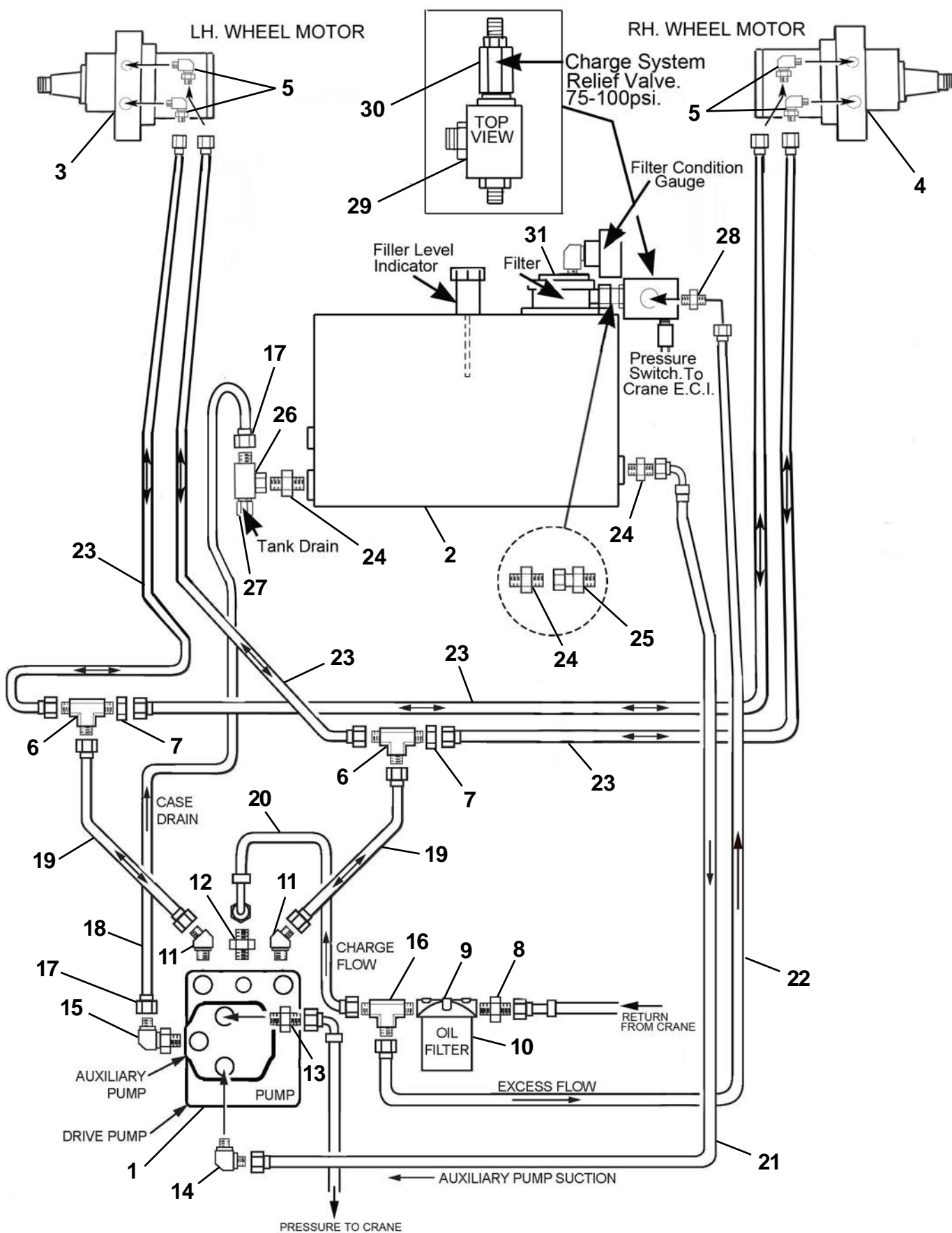
ITEM NO.	PART NO.	QTY.	DESCRIPTION
1	D001-106	1	DECAL - EXPLOSIVE
2	D001-073	1	DECAL - TIPPING
3	00-270	1	DECAL - PARK BRAKE
4	D001-270	1	DECAL - MONUMENT SETTER
5	D001-246	1	DECAL - BROUWER 1972 SEAL SMALL
6	D001-207	1	DECAL - F/N/R LEVER
7	D001-035	1	DECAL - MADE IN CANADA
8	202525	1	DECAL - CTN READ MANUAL
9	D001-160	4	DECAL - BROUWER SMALL
10	D001-054	1	DECAL - CRUSHING HAZARD SMALL
11	D001-012	1	DECAL - HIGH PRESSURE
12	D001-032	2	DECAL - CRUSHING HAZARD
13	D001-147	1	DECAL - SAFE OPERATION
14	D001-069	1	DECAL - DO NOT OVERFILL
15	D001-279	1	DECAL - USE SAFE OIL

Monument Setter Electrical Circuit.



**Brouwer Monument Setter  
Monument Setter Electrical**

ITEM NO.	PART NO.	QTY.	DESCRIPTION
1	KE10170	1	FUSE HOLDER
2	KE10062	1	10 AMP ATO
3	KE80047	1	PRESSURE SWITCH
4	KE10094	1	HELLA RELAY





**Brouwer Monument Setter  
Monument Setter Hydraulics**

ITEM NO.	PART NO.	QTY.	DESCRIPTION
1	KH30045	1	GEAR PUMP C/W 0.19 AUX PUMP
2	KH35002	1	MAXILIFT HYDRAULIC TANK
3	KH30047	1	WHEEL MOTOR L.H.
4	KH30048	1	WHEEL MOTOR R.H.
5	8-10-070320	4	FITTING. 45 DEG.
6	8-8-8-070958	2	FITTING. TEE
7	8-070118	2	1/2 BULKHEAD NUT
8	8-8-070120	1	FITTING. STRAIGHT
9	KH40075	4	FILTER HEAD
10	KH40076	1	FILTER ELEMENT
11	8-8-070320	2	FITTING. 45 DEG.
12	8-10-070120	1	FITTING. ADAPTER
13	6-6-070120	1	FITTING. STRAIGHT
14	8-12-070220	1	FITTING. 90 DEG. SWIVEL
15	8-6-070220	1	FITTING. 90 DEG.
16	6-6-6-070428	1	FITTING. TEE
17	KH01114	2	HOSE END BARB
18	4160979	1	HOSE ASSEMBLY
19	4160973	2	HOSE ASSEMBLY
20	4160971	1	HOSE ASSEMBLY
21	4161283	1	HOSE ASSEMBLY
22	4161284	1	HOSE ASSEMBLY
23	4160974	4	HOSE ASSEMBLY
24	KH00111	3	FITTING. ADAPTER
25	8-8-070181	1	FITTING. SWIVEL NUT SAE O RING ADAPTER
26	8-8-8-070433	1	FITTING. SWIVEL BRANCH TEE
27	8-070112	1	FITTING. TANK DRAIN CAP
28	06-08-070120	1	FITTING. STRAIGHT
29	KH20140	1	RELIEF VALVE - BODY
30	KH20022	1	RELIEF VALVE - CARTRIDGE
31	KH40084	1	FILTER ELEMENT







**Kesmac Inc.**

23324 Woodbine Avenue, Keswick Ontario Canada L4P 0N1

Tel (905) 476-6222 Fax (905) 476-6744

Web Site [www.brouwerkesmac.com](http://www.brouwerkesmac.com) Email [info@kesmac.com](mailto:info@kesmac.com)